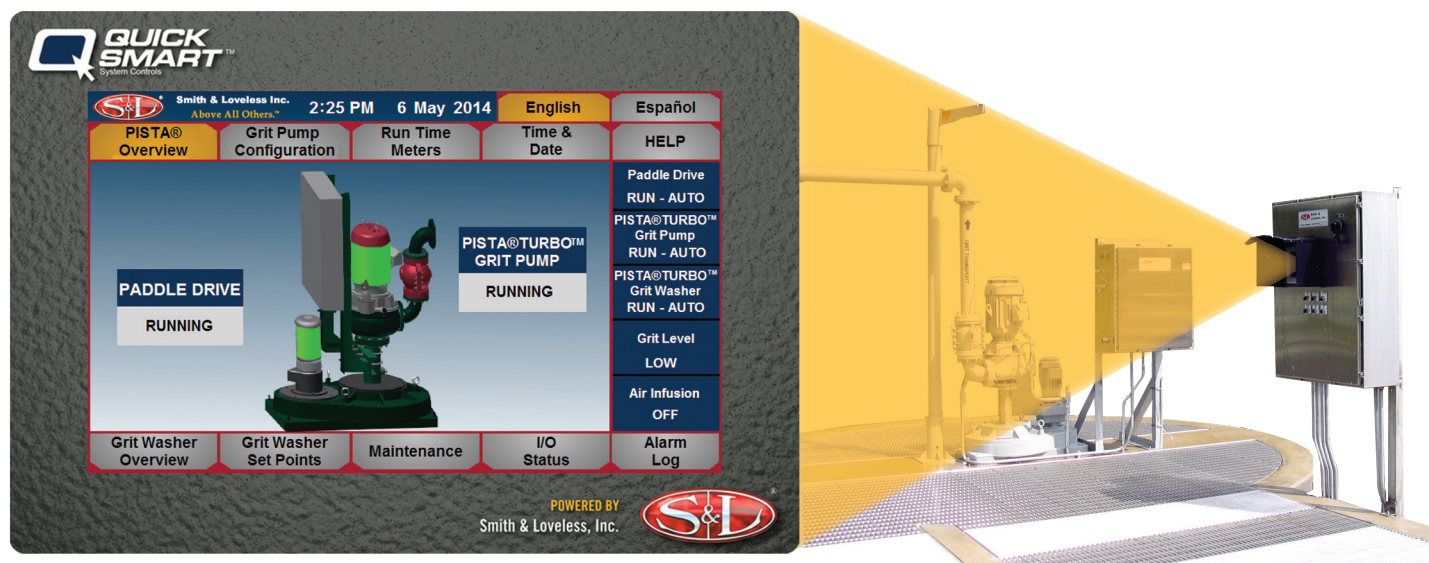


State-of-the-Art S&L Touchscreen Headworks System Controls



Improved Graphics



Increased Functionality



Improved Navigation

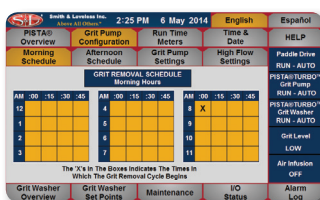
Delivering simplified operation yet powerful headwork system controls, **QUICKSMART™** System Controls provide unparalleled ability to monitor and adjust all of your headworks systems functions including grit pumping, removal and washing. A new layout makes control modifications, screen navigation and viewing of system status easier than ever, with screen function buttons and a status bar accessible from each screen. Added features take headworks system controller functionality to new levels. Like a new maintenance log feature, which displays periodic recommended operation / maintenance instructions and makes grit pump lubrication suggestions based on actual system run times. Or improved help/troubleshooting support and a new I/O Status screen that displays controller digital and analog I/O status.

Main Features

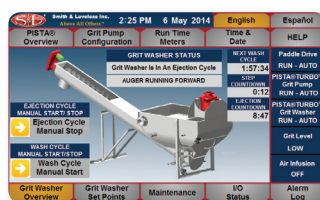
- PLC System Control
- Alarm Management
- Grit Pump Configuration
- Grit Washer Configuration
- Help / Troubleshooting Info
- Graphical System Notifications
- English / Spanish Languages

Sample Screenshots

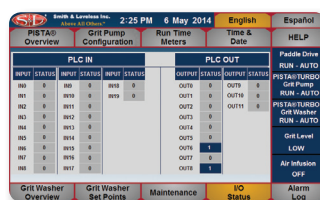
Grit Pump Configuration



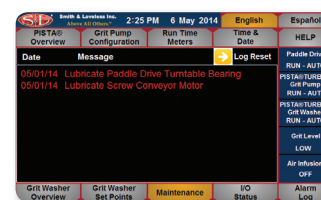
Grit Washer Overview



I/O Status Overview



Maintenance Log





QUICKSMART™ Details

- 7" (17.7cm) 65K-Color TFT LCD Touch Screen HMI
- PLC/Microprocessor-Based Controller
- NEMA 4 Rated when Installed in Enclosure
- UL Listed or Recognized
- Protected by Surge Protective Device (SPD)
- 5-Year Pro-Rated Warranty Protection

Function Controls

- Alarms (Display / Acknowledgment)
- Grit Pump Settings / High Flow
- Grit Washer Set Points / Manual Control
- Run Time Meters
- Maintenance Reminders

Alarm List

- | | |
|-------------------------------|-------------------------------------|
| • Auger Fail To Start Forward | • Grit Pump Fail To Prime |
| • Auger Fail To Start Reverse | • Partial Drain Valve Fail To Open |
| • Auger Forward Starter Fault | • Partial Drain Valve Fail To Close |
| • Auger Reverse Starter Fault | • Wash Water Valve Fail To Open |
| • Auger Forward Motion Fault | • Wash Water Valve Fail To Close |
| • Auger Reverse Motion Fault | • Grit Pump Not In Remote |
| • Paddle Drive Overload | • Screw Conveyor Not In Remote |
| • Paddle Drive Fail To Start | • Paddle Drive Not In Auto |
| • Emergency Stop Activated | • Grit Pump Not In Auto |
| • Grit Pump Overload | • Auger Not In Auto |
| • Grit Pump Fail To Start | |

Status Indicators

- | | |
|---------------------------|---------------------------|
| • Grit Pump Cycle Running | • Feed Pump Permissive |
| • Auger Running Forward | • High Grit Flow |
| • Auger Running Reverse | • Screw Conveyor Alarming |
| • Grit High Level | • Grit Pump Alarming |
| • Screw Conveyor Running | • Paddle Drive Failure |
| • Grit Pump Running | • General Failure |
| • Paddle Drive Running | |

Optional Alarms

- | | |
|---------------------|----------------------------|
| • Auger Over Heated | • Paddle Drive Over Heated |
| • Auger Overload | • Grit Pump Over Heated |

Run Timer Meters

- | | |
|--------------------|---------------------|
| • Paddle Drive RTM | • Auger Forward RTM |
| • Grit Pump RTM | • Auger Reverse RTM |

Maintenance Log

- Paddle Drive Turntable Bearing Lubrication Due
- Screw Conveyor Gearbox Lubrication Due
- Screw Conveyor Motor Inspection Due
- Grit Pump Vacuum Priming System Cleaning Due
- Grit Pump Seal Inspection Due
- Grit Pump - Pump Inspection Due

