



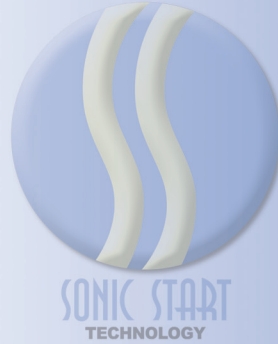
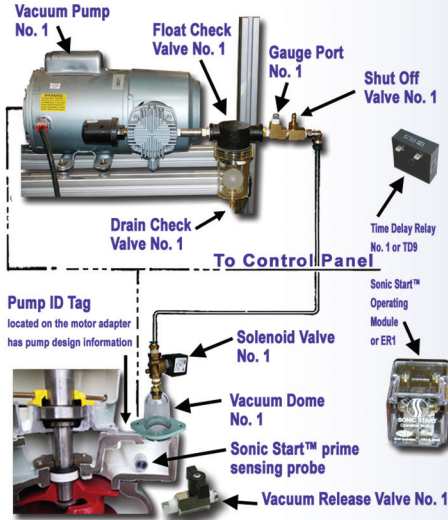
SMITH & LOVELESS INC.



SONIC START®  
Streamline™

Wet Well Mounted  
Pump Stations

# SONIC START® Streamline™



50% Fewer Vacuum Tubing  
Connection Fittings



## SONIC START® Streamline™ Eliminates Routine Maintenance

The clean and simplified Sonic Start® Streamline™ Prime Sensing System relocates the solenoid valve, eliminates the vapor filter and frees 50% of the original fitting connection points for an improved priming system. What's the difference between the Sonic Start® and the Sonic Start® Streamline™? Plenty!

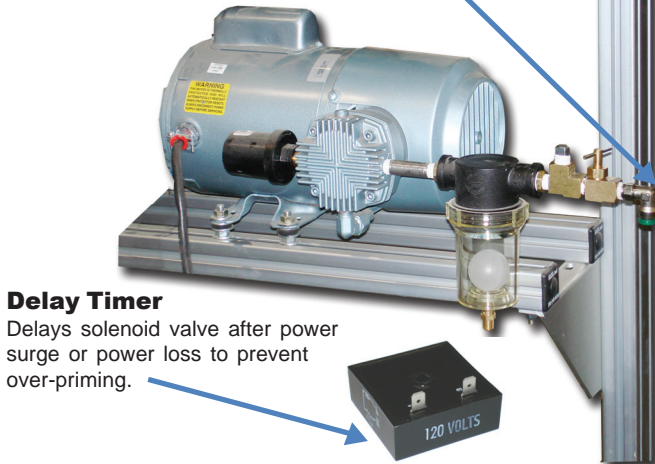
### A Detailed Look at the Improved System

#### Vacuum Pump Piping Arrangement

No solenoid valve located here or at the control panel.

#### Quick Disconnect 90° Elbow

Improved with circular uniform constriction fit, eliminating tubing gouges.

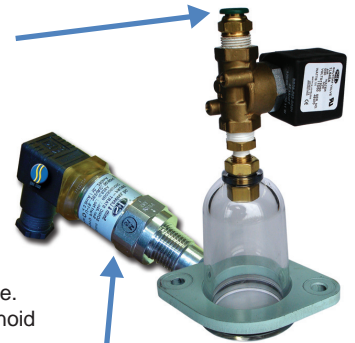


#### Quick Disconnect Male Fitting

Improved with circular uniform constriction fit, eliminating tubing gouges.

#### Sonic Start® Streamline™ Vacuum Dome Assembly

Relocating the 2-way solenoid valve to the top of the vacuum dome takes sewage pump pressure off of the vacuum tubing and tubing fittings, which stops liquid and debris from going beyond the vacuum dome. This eliminates routine cleaning of the solenoid valve and the vapor filter.

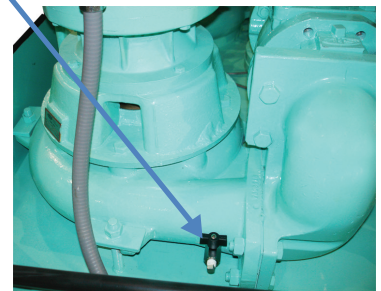


#### Sonic Start® Probe

A new, faster 200 millisecond Sonic Start® Probe.

#### Vacuum Release Valve

Located at the volute's gauge port, in case access to the solenoid or inside of the vacuum dome is required, vacuum is released here.



Online: [smithandloveless.com](http://smithandloveless.com) • Phone: 913.888.5201 • FAX: 913.888.2173

SMITH & LOVELESS INC. SYSTEM INNOVATORS FOR GLOBAL PUMPING, WATER AND WASTEWATER TREATMENT